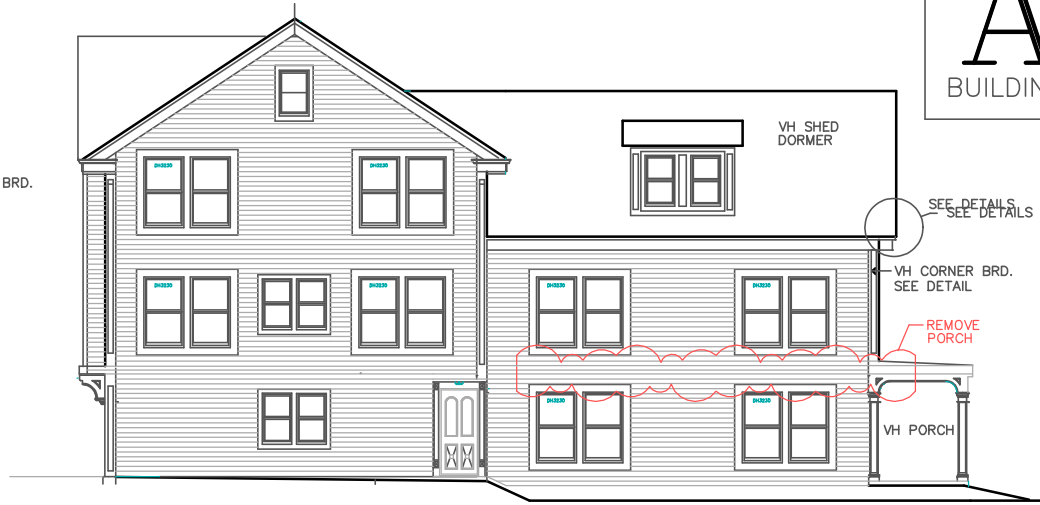
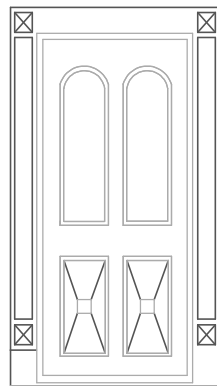


REAR ELEVATION – (NORTH)



LEFT ELEVATION – (WEST)



WINDOW-DOOR FRAME



# BLDG A

FP: 2416 SF

9-11 ALDERSEY STREET  
SOMERVILLE, MA 02143

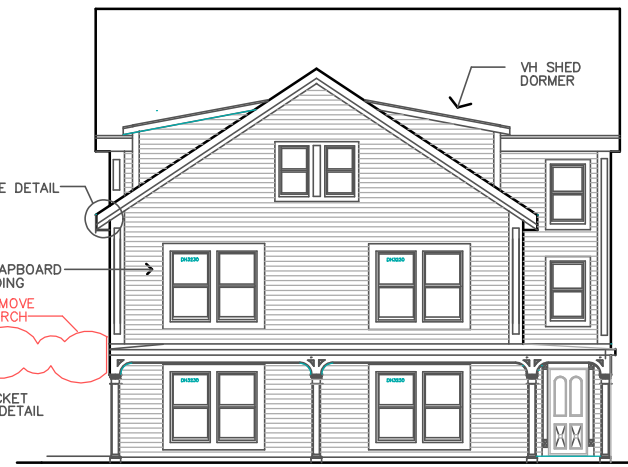
JAN 6, 2021

 Revised for JAN 20, 2021

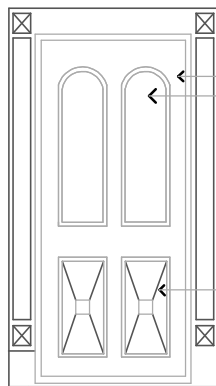
KENNETH L. POOLE, AIA ARCHITECT  
2 TEMPLE STREET MILFORD MA 01757



RIGHT ELEVATION – (EAST)



FRONT ELEVATION – (SOUTH)



WOOD DOOR  
GLASS LITES

WOOD PANEL

WINDOW-DOOR FRAME



## BLDG A

FP: 2416 SF

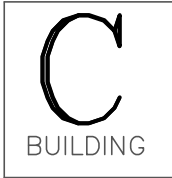
9-11 ALDERSEY STREET  
SOMERVILLE, MA 02143

JAN 6, 2021

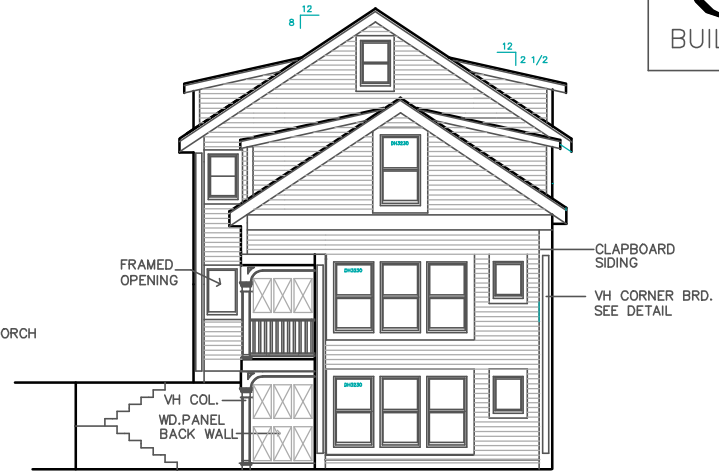
 Revised for JAN 20, 2021

KENNETH L. POOLE, AIA ARCHITECT

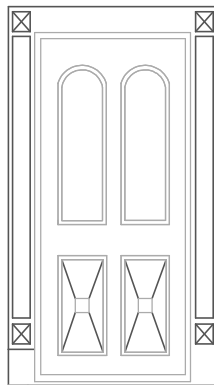
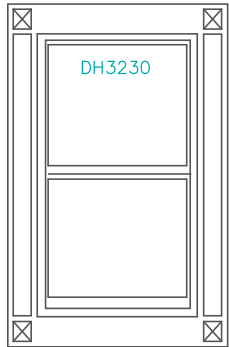
2 TEMPLE STREET MILFORD MA 01757



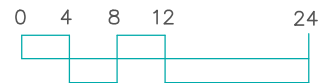
LEFT ELEVATION – (WEST)



FRONT ELEVATION – (SOUTH)



WINDOW-DOOR FRAME



## BLDG C

FP: 2006 SF

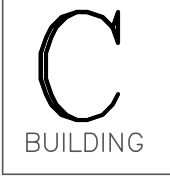
9-11 ALDERSEY STREET  
SOMERVILLE, MA 02143

JAN 6, 2021

Revised for JAN 20, 2021

KENNETH L. POOLE, AIA ARCHITECT

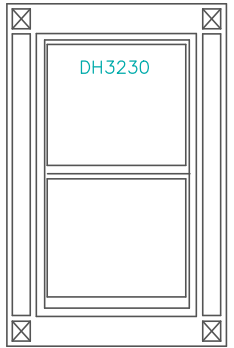
2 TEMPLE STREET MILFORD MA 01757



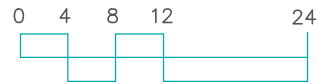
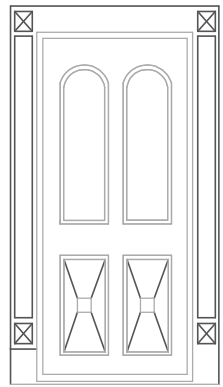
RIGHT ELEVATION – (EAST)



REAR ELEVATION – (NORTH)



WINDOW-DOOR FRAME



**BLDG C**

FP: 2006 SF

9-11 ALDERSEY STREET  
SOMERVILLE, MA 02143

JAN 6, 2021

Revised for JAN 20, 2021

KENNETH L. POOLE, AIA ARCHITECT

2 TEMPLE STREET MILFORD MA 01757